



Monterey Bay CA Chapter, NECA

National Electrical Contractors Association



October, 2025



WELCOME CENTRAL VALLEY ELECTRIC!

Please join us in welcoming our newest member, Central Valley Electric. Since 1990, Central Valley Electric Inc. has been servicing the electrical contracting needs of the greater San Joaquin Valley and has now opened a new office in Watsonville.

Their new office is located at:

**428 Airport Boulevard
Watsonville, CA 95076
(831) 428-0470**

**Accredited Representative:
Matt Wells**

CVE offers a full range of industrial electrical services for customers in a variety of industries, from repair and maintenance work, to full scale turn-key projects

We are pleased to add this professional firm to our roster and hope you will extend a welcoming hand to them as our newest members! Welcome Aboard!!

LAST CALL! ADVANCED ESTIMATING OF ELECTRICAL CONSTRUCTION CLASS SCHEDULED

**Wednesday and Thursday
October 1-2, 2025**

**Breakfast Buffet 8:00 AM
Class Begins at 8:30 AM
Lunch 12:00 PM**

**Dinner 6:00 PM
on 10/1 at Giuseppe's**

**Location: Vespera Resort
147 Stimson Avenue |
Pismo Beach, CA | 93940**

\$250 per person for NECA Members but free to Monterey Members thanks to the Wendt Scholarship. Please contact Jerri to reserve your space and make hotel reservations. Space is very limited!



INSIDE THIS EDITION:

- Welcome Central Valley Electric!*
- Last Call! Advanced Estimating Class*
- Earthquake Preparedness*
- JATC Course Completions*
- Classes Offered through JATC*
- LU #234 Availability List*
- Calendar of Events*



TO BENEFIT ... PARTICIPATE!



ARE YOU READY IF AN EARTHQUAKE HAPPENS?

You've [prepared the workplace](#) as best you can, but what happens when the ground starts shaking? Even if you've done everything you can to secure your workplace, windows may break, objects could become airborne, and employees may panic. This is not the time for confusion or to start asking questions. Everyone needs to act quickly, knowing exactly what to do and how to protect themselves.

What your employees need to know about actions they need to take during an earthquake

Old advice, such as go to the nearest doorway or run outside is [bad advice](#). It's considered dangerous and is not recommended.

The one method that is considered the safest and most effective earthquake response is Drop, Cover, and Hold On. We practice it throughout the world during the [Great Shakeout](#) each October. You can also practice this drill throughout the year.

What your employees need to do during an earthquake: Drop, Cover, and Hold On

As the name suggests, these are the three steps that must be taken when the shaking starts:

- **DROP** to your hands and knees.
- **COVER** your head and neck with one arm and hand. If possible, crawl under a nearby table or desk, or next to an interior wall away from windows.
- **HOLD ON** to a table or desk with one hand until the shaking stops.

Of course, not everyone will have access to a table or desk to crawl under during an earthquake. What if you employ people with disabilities? What if you're outside? What if you're driving? Drop, Cover, and Hold On has you covered in these and other situations.



[Drop, Cover, and Hold On steps for people with disabilities](#)

For those with disabilities: If you use a wheelchair, lock the device, lean forward and cover your head, then hold on. If you use a walker with a seating pad, you'll also need to lock the device, then sit down on the seating pad, and cover your head. If you use a cane or other assistive device to walk, see the Earthquake County Alliance's [Accessibility Resources](#).

For those outside: Stay outside. Drop to the ground as soon as the shaking starts, then crawl only a short distance to a clear area, away from trees, power lines, signs, or any other hazard. Injuries often occur [when people try to move more than a few feet](#) during earthquakes.

For drivers: Immediately pull over to the curb or shoulder and stop the car; then set the parking brake. Stay away from overpasses, bridges, power lines, or any other hazard, as these can fall on top of your vehicle. Stay inside the car until the shaking stops. Once the earthquake is over, proceed with caution and avoid fallen debris, cracked roads, and emergency vehicles.

For those in a store: Drop to the ground right away. If you

can, crawl next to a [shopping cart or under a clothing rack](#) for cover. Hold on as best you can.

What to cover at your safety meeting on earthquake response

Practice the Drop, Cover, and Hold On drill. With California's earthquake history, it's a good idea to practice this drill a few times during the year. Since your employees could be just about anywhere when an earthquake happens, make sure to modify your training to include the information above about being outside, driving, or in a store.

If you employ people with disabilities, include the [Drop, Cover, and Hold On modifications](#) for these employees, to ensure they can find safety during an earthquake.

More information on what to do in other [specific situations](#) from the Earthquake Country Alliance. But whatever situation you're in, remember Drop or Lock, Cover, and Hold On, three simple steps to protect yourself during an earthquake.

After you practice Drop, Cover, and Hold On with your employees, review and discuss the results and make

any needed improvements. Next, discuss with your staff what to do [after an earthquake](#).



UPCOMING CLASSES OFFERED THROUGH THE JATC

Please note that if you reserve a space and do not show up for class, you will be responsible for paying for the class.

CPR/FIRST AID

**Saturday, October 11th
8am-1pm**

This is NOT a drop-in class. Sign-up is required.

Instructor Merralinda Goddard will be teaching on the basics of First Aid and CPR.

Please note that class size is limited and sign-up is required. (Also note that if you

reserve a space and do not show up for class, you will be responsible for paying for the class.)

CONFINED SPACE AWARENESS TRAINING

Cancelled due to lack of sign-ups. We hope to reschedule for sometime soon. Please contact us if you have interest in attending!

OSHA 10

If you are interested in taking an online OSHA 10 course, please contact Stacy at info@tricountyjatc.org to sign up.

PLEASE NOTE THAT ALL CLASSES REQUIRE REGISTRATION PRIOR TO THE CLASS.

Please contact Stacy at info@tricountyjatc.org to sign up for all classes.

We are in the process of adding classes to our calendar. Please reach out if you have a request for a class that would be beneficial to your firm.

APPRENTICE APPLICATION INFORMATION

The Tri-County Electrical JATC is accepting applications on a year-round basis. **OUR PROCEDURES HAVE CHANGED!!!** Please note that we will only accept online applications and applicants need only follow the directions obtained in our website to apply. For more information regarding the process, please click in the following link: [JATC INFORMATION](#)

CLASS COMPLETIONS

None

JATC INSTRUCTORS NEEDED!

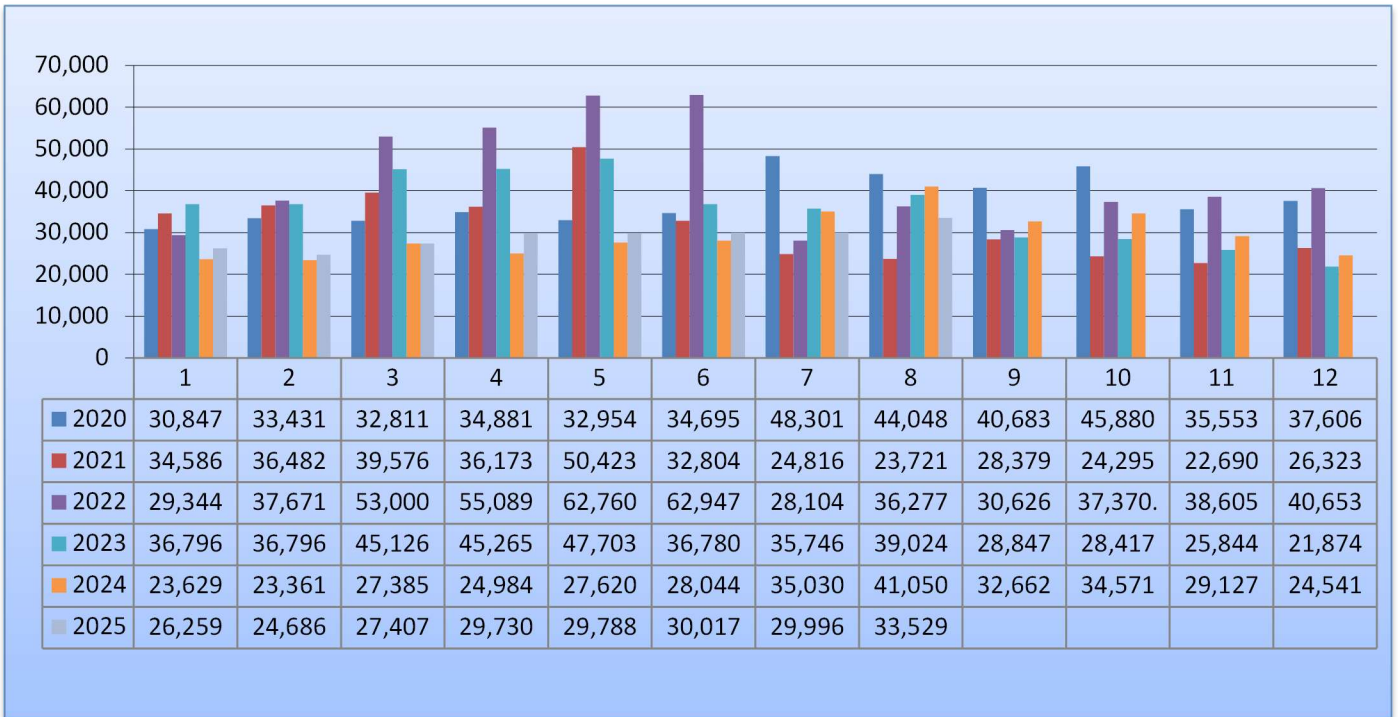
The JATC is seeking instructors for apprenticeship and journeyman training courses on an ongoing basis. If you or someone that you know is interested in teaching – even to substitute or teach journeyman upgrade classes, or if you have a specialty that you would like to assist in for one night, please contact Stacy at the JATC office for more information. Your help in teaching our future generations is always greatly appreciated.



AVAILABILITY LIST UPDATE

On the Inside Out-of-Work List, there are 70 on Book 1, 127 on Book 2, 31 on Book 3 and 4 on Book 4. There are 3 Book 1, 5 on Book 2, 1 on Book 3 and 0 on Book 4 for Sound & Comm. There are no CE's on Book 1 and 0 on Book 2, 68 CW1's and 3 CW2's available. ***If you are interested in hiring a new apprentice in the near future, please contact Stacy at the JATC office to let her know your future needs. No apprentices are currently available.***

INSIDE WORK HOUR HISTORY



UPCOMING EVENTS

October 1-2, 2025

Advanced Estimating Education Class
Vespera Resort
Pismo Beach, CA

October 4, 2025

Local #234 BBQ
Toro Park
Salinas, CA

November 17-19, 2025

etA Regional Conference
Las Vegas, NV

December 5, 2025

NECA Christmas Party
The Sardine Factory
By Invitation Only

January 21-23, 2026

Electri Meeting
Omni La Mansion del Rio
San Antonio, TX

February 18-20, 2026

Wine and Wisdom
Allegretto Resort, Paso Robles, CA